

Happenings

Minnesota Community Corrections Association

Special Program For Female Offenders Opens In Arrowhead Region

"Project Grace," a self-identification and job-and-life readiness plan for females involved in the Criminal Justice System, opened in the six county A.R.C. consortium September 1, 1987, funded jointly by Duluth and Hibbing Technical Schools and Arrowhead Regional Corrections.

For a long time, it has been felt that the "women of criminal justice" had special needs that were not being met in traditionally male-oriented facilities and programs. And female relatives of offenders were often left out of the rehabilitation process.

The "Grace Project" offers these "expanded life choices":

- 1) Learn about community resources available to you and your family.
- 2) Gain skills necessary to seek employment.
- 3) Form an ongoing support system for yourself.
- 4) Make a plan for reaching personal and/or work goals.
- 5) Try new ways to communicate and make decisions.
- 6) Assess your work values, interests and abilities.
- 7) Recognize your self worth.
- 8) Increase your self-confidence.

All classes begin at Hibbing Tech or Duluth Tech, but after-care groups are planned. Referrals are made by parole or probation workers, chemical dependency counselors, social workers, and other functionaries. Clients apply on a standard form that describes educational and social background, child-care needs, and transportation modes/location information.

A wide variety of women are eligible for the 22-part program: female offenders, mothers of juvenile offenders, and spouses/partners of male offenders. Subjects met include:

Building Self-esteem

Job Search

Career Goals and Options

Change and Decision Making

Goal Setting

Parent-Child Relationships and Issues

Skill Assessment

Communication and Assertiveness

Money Management

Hidden Job Markets

Applications, Resumes and Interviews

Transitions to work

Stress Management

Changing Roles and lifestyles

For further information, contact Program Coordinator Ms. Toni Nemanick, Hibbing Technical Institute, 1-800-433-9989. She has been planning this program with A.R.C. leaders, especially Ms. Jaye Olson, Chair of the Women's Issues Committee, for years: and she will welcome all inquiries and inputs.

Single parents and displaced home-makers not involved in the Correctional System can enroll in Project Grace for a nominal fee if space is available. Assistance is there for child care and transportation. A brand new era for disadvantaged females in the Arrowhead Regional Criminal Justice maze has now begun. Will it become a model?

John A. Richardson
Corrections Agent

Judge Lansing to Keynote Conference



Judge Harriet Lansing of the State Court of Appeals will be the keynote speaker for the MCCA Winter Conference which is scheduled for February 11 and 12, 1988. Judge Lansing was one of the original appointees to the Appeals Court in November 1983. In the five years she served as judge of the Ramsey County District Court, Judge Lansing was very supportive of Community Corrections and particularly concerned with female offenders.

The conference will include an exciting and informative array of workshops and opportunities for socialization. We will include sessions on prevention of chemical dependency relapse, treatment of cocaine abuse, day treatment, domestic abuse and divorce mediation, chemical dependency prevention for juveniles, legal liability and eating disorders. Ricky Littlefield of St. Thomas College will discuss changes in non-profit agencies. Representatives from Genesis II and Reentry Metro will discuss cooperative programs for women.

We will, of course, have plenty of social and recreational opportunities in the

Judge Lansing continued on page 5

INSTITUTE ON BLACK CHEMICAL ABUSE EXPANDS SERVICES, SHORTENS NAME

The Institute (formerly known as MIBCA) has changed its name. The name change came about due to the Institute gaining prominence as a national resource as well as their expansion into the field of mental health counseling.

The Institute, for quite some time, has been developing and delivering their nationwide training and consulting services. One of the most recent and critical parts of their increased national effort is the Replication Project. The Institute on Black Chemical Abuse has received a two-year, \$125,000.00 grant from the Pew Charitable Trusts, out of the funds of the Pew Memorial Trust. The \$125,000.00 grant will be used as "seed money" to develop and launch a new initiative to establish programs based on the Institute's service model in other areas of the United States. The grant provides an additional \$50,000.00 contingent on the Institute's ability to match those funds from other sources.

The new funds will enable IBCA to hire a Replication Project Coordinator, increase national fundraising efforts and design and implement one demonstration program at a site yet to be decided.

Eventually, a network of autonomous chemical dependency programs, offering services to blacks, based on the model that MIBCA pioneered is envisioned. The Institute's ongoing role will be to provide training, management counseling and other technical assistance.

On the home front, the Institute has begun producing a weekly, half-hour program entitled, "The IBCA Alcohol and Drug Forum" on KMOJ radio in Minneapolis (89.9 FM). The program, which airs at 6:30 PM every Friday, is co-hosted by Institute Assistant Director, BoisSan Moore and radio producer, Matt Talley.

Topics already covered include, "AIDS in the Black Community," "Co-dependency" and "Marketing Booze to Blacks—The Growing Debate About Alcohol Advertising." Future topics include, "How to Talk To Your Children About Drugs and Alcohol," and "Black Children of Alcoholics."

A total of twenty-six programs will be produced in sequence, after which the entire series will be re-broadcast to fill out a full 52-week broadcast season. It is anticipated that this series will prove to be a very powerful tool for educating the public and keeping people abreast of the issues.

Hennepin Corrections Training Announced

Listed below is the five month training schedule for all staff in the Hennepin County Bureau of Community Corrections (paid employees, volunteers, interns) and for all personnel in Community Corrections contracted programs. This schedule is in addition to any training conducted by individual divisions, institutions or outside organizations. Before each session, a flyer will be distributed with further details.

All speakers, topics and sites are subject to change.

DATE - TIME - PLACE	TOPIC	PRESENTERS
Thurs., October 15, 1987 8:30-11:30 a.m. C-2300	"How to Talk with Offenders About AIDS!"	Dan Cain, Director, Eden House Earl Pike, MN AIDS Project
Thurs., November 19, 1987 9:00-11:00 a.m. C-2300	"Gambling As Compulsive Behavior"	Terry Sarazin and members of Gamblers Anonymous
Tues., December 15, 1987 9:00-11:00 a.m. C-2300	"Strategies With Dysfunctional Clients; Using Cognitive Behavior Theory"	Monica Mandel, Ph.D. Dept. of Psychiatry HC Medical Center
Tues., January 12, 1988 9:00-11:00 a.m. C-2300	"Attention Deficit Disorders: Adolescents and Adults"	Dr. Barry Garfinkel, M.D. Division of Child and Adolescent Psychiatry University of Minnesota
Weds., February 10, 1988 9:00-11:00 a.m. C-2300	"Burned-Out on Burnout?: Handling Your Work Stress"	Judy Miller, Professor, Social Work Department College of St. Catherine

For further information, please call Rich Wheaton, 348-2975.

Institute Hosts Open House October 23rd

The institute on Black Chemical Abuse cordially invites you to attend an open house here at the new offices (2614 Nicollet Avenue, S) on Friday, October 23rd from 3 to 6 p.m. We also plan to formally introduce our new name and logo at that time.

Please mark your calendars now, and plan to be with us on the 23rd.

Special Notice

Position Available Immediately at I.B.C.A.

National Replication Project Coordinator

Duties will include planning, fund development, training, technical assistance, and management for a nationwide network of autonomous chemical dependency programs that will be based on the institute's service model.

Applicants should have strong management skills, and a demonstrable working knowledge of the black community. Familiarity with the chemical dependency field important.

Excellent salary and benefits. Send resume to: Peter Bell, Institute on Black Chemical Abuse, 2614 Nicollet Avenue, Minneapolis, MN 55408

WILDER CAP EXTENDS CUSTODY AND VISITATION DISPUTE PROGRAM

The Wilder Community Assistance Program, in conjunction with the Wilder Child Guidance Clinic, is offering a new program designed to assist families who are involved in difficult custody and visitation disputes. The program is being closely coordinated with the Ramsey County Community Corrections Department's Domestic Relations Division.

The program will consist of separate men's and women's groups meeting one time per week for 2 hours, and children's groups meeting once a week for 1-1/2 hours. All groups will meet for ten weeks. Individual sessions will complement the group sessions with structured couples and parent-child sessions provided when appropriate.

Continued on page 5

Board of Directors

WE WANT YOU TO KNOW

Sidney Johnson, President
 Elder Community Assistance Program
 666 Marshall Avenue
 St. Paul, MN 55104

Patt Adair
 Genesis II for Women
 3036 University Ave. S.E.
 Minneapolis, MN 55414

Dennis Avery
 Hennepin County Parole Field Services
 1800 Chicago Avenue South
 Minneapolis, MN 55404

Joan Cichosz
 Ramsey County Community Corrections
 965 Payne Avenue
 St. Paul, MN 55106

Bruce Clendenen
 Reentry West
 855 West 7th Street
 St. Paul, MN 55102

Janet Entzel
 Department of Corrections
 300 Bigelow Building
 450 North Syndicate Street
 St. Paul, MN 55104

Jim Cyson
 MCF—St. Cloud
 Box B
 St. Cloud, MN 56301

Bob Elkins, Secretary
 Hennepin County Parole Field Services
 1800 Chicago Avenue South
 Minneapolis, MN 55404

Earb Emer
 180 Degrees, Inc.
 236 Clifton Avenue
 Minneapolis, MN 55403

Dale Fisher
 Hennepin County Court Services
 1900 Chicago Avenue South
 Minneapolis, MN 55404

Rochelle Graves
 Hennepin County Parole Field Services
 1800 Chicago Avenue South
 Minneapolis, MN 55404

Jeff Martin
 Department of Corrections
 300 Bigelow Building
 450 North Syndicate Street
 St. Paul, MN 55104

Jon Penton
 Project Remand, Inc.
 150 East Kellogg Blvd., Suite 650
 St. Paul, MN 55101

Tim Peterson
 Ramsey County Community Corrections
 2489 Rice #100
 St. Paul, MN 55113

Ben Roberts
 Ramsey County Community Corrections
 1595 Selby Avenue
 St. Paul, MN 55104

Laura Sissala, Vice President
 Rem-Lyndale, Inc.
 10 Lyndale Avenue North
 Minneapolis, MN 55411

Ray Ward, Treasurer
 Operation deNovo
 251 Portland Avenue
 Minneapolis, MN 55415



The Risk of Community Corrections By Rod Johnson

Some time ago, I wrote in this column how community corrections has come full circle in many ways. Clients have changed from the more amenable and lower risk to individuals with greater needs and posing a much greater risk to the community. I also noted that our concept of service seemed to be evolving from therapeutic to sanctions with therapeutic elements.

The recent death of Nikki Mau caused me to think again about the path that we in community corrections walk. Nikki died allegedly at the hands of a prison releasee who spent a transition period in a community corrections program before going out on his own. The criminal history of this individual underscores the type of high risk offenders seen in some community corrections programs today.

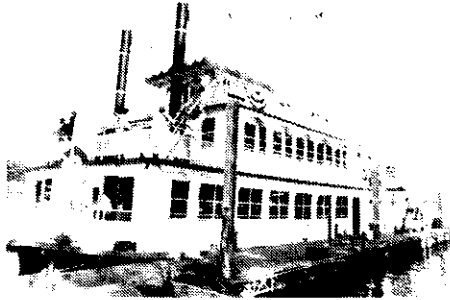
Should individuals like the alleged killer be in a community corrections program on release from an institution? Given our current system of criminal justice, the answer has to be yes! The only alternative is release directly to the community with minimal assistance and reduced surveillance. Public safety requires that a supervised transition period be used for high risk prison releasees. The risk to public safety during such programming seems to be very low and the services are helpful to many offenders.

Community corrections programs have assumed the responsibility to do what they can to increase the odds of success knowing that for some offenders it won't be enough. We also know that by trying, we risk the wrath of the community for every ex-client that fails.

In light of such a senseless act, we all try to understand why something so horrible could have happened. When the answer seems hopelessly complex or unanswerable, we often look

We Want You...Continued on page 5

MINNESOTA COMMUNITY CORRECTIONS ASSOCIATION			
666 Marshall Avenue St. Paul, MN 55104			
NAME: _____			
PROGRAM AGENCY: _____			
WORK ROLE: _____			
WORK PHONE: _____			
ADDRESS: _____			
ADDRESS SHOWN	INDIVIDUAL MEMBERSHIP	_____	\$ 15
IS:	PROGRAM MEMBERSHIP	_____	\$ 100
_____ HOME	STUDENT/VOLUNTEER MEMBERSHIP	_____	\$ 5
_____ WORK			
Make checks payable to MCCA			



It's All Upstream For 180 Degrees

By Karole Williams

The sound of Dixieland music and "Welcome Aboard" was heard as people met in Stillwater on August 17th. The first of what is hoped to be an annual fundraising event was held for the benefit of 180 Degree, Inc.

The event took place aboard the Andiamo Showboat: a large, luxurious stern-wheeler that operates out of Stillwater on the St. Croix River. Over 100 supporters, friends and family attended the event. Included among the guests were State Representative Sandy Pappas, MN Commissioner of Corrections, Orville Pung, James Bruton, the Executive Officer of Adult Release and Manager of Hennepin County Parole Field Services, Dennis Avery.

Playing Captain for the trip, Tom Zoet (by day known as 180's Executive Director) welcomed the boat's passengers. Entertainment was provided throughout the two and one-half hour trip by the Mouldy Figs, a well known, local Dixieland Band. The weather cooperated beautifully and allowed for the full use of the three level stern-wheeler. Hors d'oeuvres were served and refreshments were available from the cash bar. People listened to Dixieland music and danced on the lower level. Those on the upper deck took full advantage of the opportunity to relax and enjoy the view of the beautiful St. Croix valley.

Proceeds from the event are earmarked for the 180 Degrees Capitol Improvement Fund. The first project will be the badly needed roof replacement at the 180 Degree facility.

At the trips end, people disembarked with only one complaint...that the trip had ended.



ASSAULTERS WILL PAY THE PRICE

By Dale Fisher

Persons convicted of assaultive offenses are going to be hit in the pocketbook, in addition to other penalties imposed by the courts.

The 1987 state legislature imposed mandatory fines in assault convictions. The potentially large amount of money collected from the fines is to go to victim assistance programs.

The new law instructs the courts to impose a fine of not less than \$500 for the crimes of Assault First Degree, Assault on an Unborn Child First Degree and Criminal Sexual Conduct First Degree.

A \$300 fine is to be imposed for second and third degrees of assault and Criminal Sexual Conduct and Second Degree Assault on an Unborn Child.

A \$100 fine will be charged for Assault in the Fourth Degree or Fifth Degree and Third Degree Assault on an Unborn Child.

The court may not waive payment of these fines or approve installment payments unless it finds that the convicted person is indigent or that the fine would create undue hardship for the offender or his family.

Victim assistance programs will be the beneficiary of this legislation. Seventy percent of the fines are to go to local victim assistance programs which provide services locally in the county in which the crime was committed. The remaining thirty percent will be sent to the state commissioner of finance for a special crime victim and witness account.

The legislature also strengthened the requirement that surcharges will be assessed for all criminal convictions, for felony, gross misdemeanors and misdemeanors. If the sentence does not include payment of a fine the court "shall impose an assessment of not less than \$25 nor more than \$50." If the court orders a fine of any amount, including a fine of less than \$100, the court is mandated to order a surcharge of ten percent of the fine. This surcharge applies whether or not the person is sentenced to prison or if the sentence is suspended. Like the fines for assaultive offenses, the surcharge may not be waived unless the court finds that the convicted person is indigent or the surcharge would create undue hardship for the convicted person or the immediate family.

The funds for the assessments will be sent to the state to be included in the crime victim and witness account.

Wilder CAP Continued...from page 2

Adult Groups will offer support through separation and divorce, grief and loss issues, and will allow parents to disengage from conflict so that they may act in the best interests of their children.

Children's Groups will allow children to share common experiences and will emphasize healthy expression of feelings, improved self-esteem and problem-solving skills related to separation and divorce.

Participants in the program must reside in the East Metro area and will pay for services on a sliding fee scale.

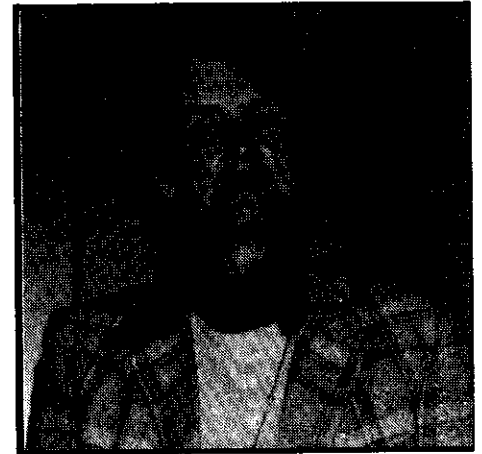
For referrals, further information, or to offer suggestions about the program, please contact Mary Montgomery, Coordinator Custody and Visitation Dispute Program, 221-0048.

We Want You...Continued from page 3

for someone to blame. In cases like this, community corrections programs can become a convenient scapegoat. Residential programs seem particularly vulnerable to be blamed when a current or even long departed client commits a crime. For some reason, the press and the public seem to perceive more accountability and responsibility when live-in programs are involved than any other type of assistance.

Could more have been done with this offender and others like him? Would additional services have made any difference? Can we predict which high risk offenders will be violent again? Can we prevent all such acts of violence? Sadly the solutions, expertise and resources are not within our grasp and will never be available. Human behavior is complex and 100% predictability is not possible, but we can provide services that improve the odds. We have assumed a responsibility to do the best we can with different clients and meager resources, knowing we will read about those who fail and again feel the pain of understanding what failure means in our business.

Women's Residence Gets New Director, Remodeling



By Nancy Massey

Ascension Place at 1803 Bryant Avenue North in Minneapolis is a supportive living residence for 32 women. This summer has seen several changes here. Roseann Giguere completed three years of work for Ascension Place including community awareness, fiscal planning and programming. Roseann said good-bye but with a promise of continued support for the work of Ascension Place. Nancy Massey has accepted the position of Executive Director and began in May. There was a special "learning the ropes" period in store for me as the renovation work began in June.

Earlier this year the McKnight Foundation and the Minneapolis Community Development Agency each granted \$40,000 towards needed work which is only now being completed. The excitement of a new kitchen and upgraded residence rooms makes up for the inconvenience and discomfort which was our lot for 2½ months.

Two things occur to me...this is a quick way to understand the physical plant and what a luxury to have (almost) everything up to code.

Ascension Place is exciting and hope filled with a philosophy based on the belief that healing is nurtured in an environment that is physically safe, wholistic in approach and rooted in hope.

Judge Lansing continued from page 1
beautiful, wooded setting of Wilder Forest. (Okay, so maybe I overdid last month's announcement about the wonderful coolness of the setting. It was written during the worst summer heat when my air conditioner died.)

Full details of the conference and registration will be included in the next issue of Happenings. Watch it in December and make plans to join us.

MCCA Training Major Modalities In The Treatment Of Sexual Deviance - An Applied Perspective

October 21, 1987, Wednesday, 10:00 AM to 3PM

What measure can be taken to prevent an identified sex offender from repeating sexually assaultive behavior. Incarceration is in and of itself an insufficient means of altering an offenders behavior. Therefore, in addition to custodial measures, correctional professionals must turn to the medical and behavioral sciences for assistance in remediating the psychological dysfunction in the offender, that leads him/her, under certain stressful circumstances, to victimize others.

Rehabilitation efforts must consider four basic issues. This seminar will explore in depth (1) the offender - addressing amenability to treatment; (2) the setting - institutional, residential, and out-patient programming; (3) therapeutic approaches used in the treatment of sexual deviancy; and (4) outcome - how do we measure response to the therapeutic intervention and determine when the offender is rehabilitated.

Presenter: George Ellis, M.A., Director, Project Pathfinder

At the request of the MCCA Membership, The Training Committee has invited Mr. Ellis to conduct an extended workshop on the treatment of sexual pathology.

Please note this is a 4 hour workshop; we will adjourn for lunch between 12 noon and 1 pm.

The October training sessions will be held at 666 Marshall Ave. in St. Paul. DOC employees are welcome to attend. Please register early by calling Reentry Services at 612/292-1466, as space allows for a maximum of 40 participants per workshop.

Happenings

A publication of the Minnesota Community Corrections Association, 666 Marshall Ave., St. Paul, MN 55104 -- 292-1131.

The opinions expressed in the Happenings are those of the contributing writers.

Readers are encouraged to respond to the content of this newsletter and to write on topics of interest to its readers. The staff reserves the right to edit submitted articles. Copy deadline is the 25th of odd-numbered months. **Members of the newsletter committee are:**

Leroy Felder

Wildier CAP

Dale Fisher, Editor

Hennepin County Court Services

Tom Gothman

Reentry West

Mia Olsen

Genesis II For Women

Tim Peterson

Ramsey Co. Community Corrections

Ben Roberts

Ramsey Co. Community Corrections

Karole Williams

We would like to thank the men in the Graphic Communications Department at MCF-STW for their help in publishing this newsletter.

MINNESOTA COMMUNITY CORRECTIONS ASSOCIATION
666 Marshall Avenue
St. Paul, MN 55104

NON-PROFIT ORG.
U.S. POSTAGE
PAID
PERMIT NO. 1994
MPLS. MN