

Happenings

Minnesota Community Corrections Association



MCCA WINTER CONFERENCE SET FOR FEBRUARY 12-13

Living up to our reputation-Continuing the leadership-will be the theme of the Annual Conference scheduled for February 12-13, 1987. By popular demand, this year's gathering will again be held at beautiful Wilder Forest near Marine on the St. Croix.

In the spirit of the theme, participants will discuss ways of improving our services and continuing our growth and leadership.

The wooded setting at Wilder Forest will lend itself to the spirit of relaxation and allow a real break-away from the job. Thursday evening we will put our cares behind us and enjoy an evening with friends and co-workers, joining in a scavenger hunt, trying out folk dances, hay rides, games, socializing. Wilder also has groomed ski trails. If you don't have your own skis, or would like to try cross-

country skiing for the first time, Wilder has equipment available at no cost to conferees.

Be Comfortable

In keeping with the theme of the conference and the comfortable setting of the Forest, participants are urged to wear comfortable and casual clothes.

Spend the Night

The enjoyment of the evening need not be cut short by a drive back home. Plan to spend the night with us at Wilder Forest. For a cost hardly more than the trip back to town, you can forget the drive and relax with us.

Register Now

February 1 is the deadline for registration. Simply fill out the registration form in the conference flier in this issue and mail it to Ray Ward.

Les Green Featured as Conference

Les Green, was from 1982 to 1986, the Executive Officer of the Office of Adult Release for the Minnesota Department of Corrections after serving for seven years as Chairman and Vice Chairman of the Minnesota Corrections Board. He has previous experience as an instructor at the College of St. Benedict in St. Cloud and at St. Cloud University. A well known "success story" in Minnesota Corrections, Les rose from the ranks of inmates in the state corrections system.

As Executive Officer for Adult Release, Les was intimately involved in the decision to release offenders, including issues of appropriateness for community treatment and danger to the community.

Since leaving the Department of Corrections Les is involved in private business in St. Cloud



Meet The Speakers

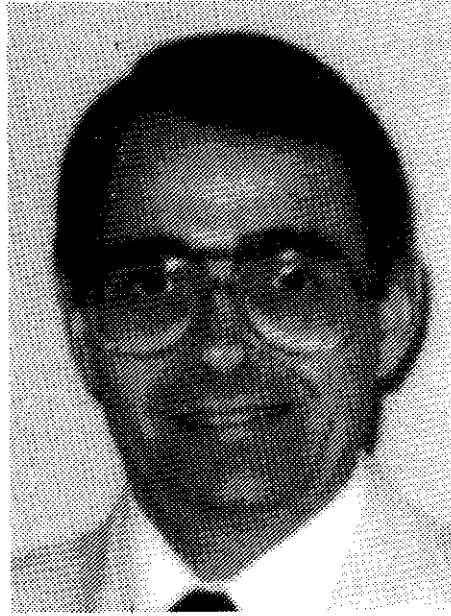
TOM ZOET ("Marketing Community Corrections") has been involved in community corrections for over 16 years. He's worked in group homes, juvenile and adult correctional settings, and as a PO. In addition, he's written several articles which have appeared in national correctional journals. His current position is Executive Director of 180 Degrees, Inc., a halfwayhouse for adult male ex-offenders.



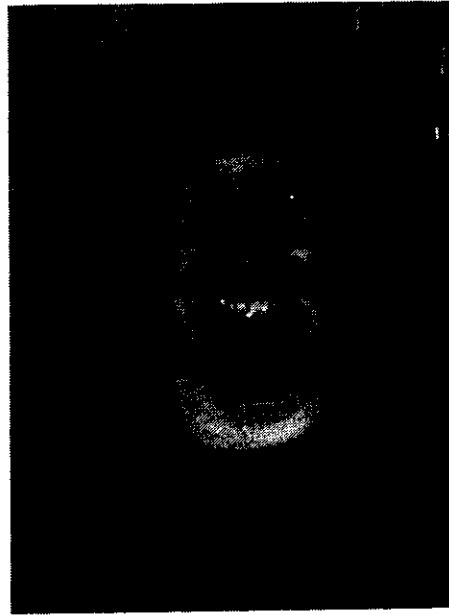
BRUCE CLENDENEN ("Marketing Community Corrections") has been at Re-Entry Services for ten years, seven as Program Director. A twelve-year veteran of the criminal justice field, Bruce previously taught school for four years.



JAMES BRUTON ("Supervised Release") Executive Officer of Adult Release for the DOC has a twenty-year work history that covers a wide range of experience in the criminal justice field in both the adult and juvenile field and institutional services. He also works as a college instructor in corrections.



BONNIE YARGER ("Reflexology and Body Massage") is a Certified Massage Therapist, working at the Uptown YMCA in Minneapolis. She has completed the comprehensive course at the Minneapolis School of Massage Inc. and is intern supervisor for the school.



KATHY TAPPER ("Reflexology and Body Massage") is a Certified Sports Massage Therapist. She completed advanced study at the Minneapolis School of Massage and interned at the University of Minnesota Women's Athletic Department. Kathy is employed at Yvonne's Face of Edina (skin specialist).



VICKI STEWART ("Living a Health-Full Life Naturally") Coordinator of Educational Services at Turtle Island Health Center in St. Paul for eight years. Community lecturer and instructor of courses on holistic health, natural foods, cooking, diet and nutrition.



Board of Directors

Jodney Johnson, President
 Wilder Community Assistance Program
 666 Marshall Avenue
 St. Paul, MN 55104

Patt Adair
 Genesis II for Women
 3036 University Ave. S.E.
 Minneapolis, MN 55414

Dennis Avery
 Hennepin County Parole Field Services
 1800 Chicago Avenue South
 Minneapolis, MN 55404

Joan Cichosz
 Ramsey County Community Corrections
 965 Payne Avenue
 St. Paul, MN 55106

Bruce Clendenen
 Reentry West
 855 West 7th Street
 St. Paul, MN 55102

Janet Entzel
 Department of Corrections
 300 Bigelow Building
 450 North Syndicate Street
 St. Paul, MN 55104

Jim Cyson
 MCF—St. Cloud
 Box B
 St. Cloud, MN 56301

Bob Elkins, Secretary
 Hennepin County Parole Field Services
 1800 Chicago Avenue South
 Minneapolis, MN 55404

Barb Emer
 180 Degrees, Inc.
 236 Clifton Avenue
 Minneapolis, MN 55403

Dale Fisher
 Hennepin County Court Services
 1900 Chicago Avenue South
 Minneapolis, MN 55404

Rochelle Graves
 Hennepin County Attorney's Office
 C-2100 Government Center
 Minneapolis, MN 55487

Jeff Martin
 Department of Corrections
 300 Bigelow Building
 450 North Syndicate Street
 St. Paul, MN 55104

Jon Penton
 Project Remand, Inc.
 150 Kellogg Blvd., Suite 650
 St. Paul, MN 55101

Tim Peterson
 Ramsey County Community Corrections
 2489 Rice #100
 St. Paul, MN 55113

Ben Roberts
 Ramsey County Community Corrections
 1595 Selby Avenue
 St. Paul, MN 55104

Laura Sissala, Vice President
 Rem-Lyndale, Inc.
 2210 Lyndale Avenue North
 Minneapolis, MN 55411

Ray Ward, Treasurer
 Operation deNovo
 251 Portland Avenue
 Minneapolis, MN 55415

WE WANT YOU TO KNOW



by Rod Johnson

Our society has become quite predictable at least in one way. It seems we can focus on only one problem at a time and then only briefly. Once identified, our public officials write new laws and sometimes even provide funding with much fanfare. Interest quickly wanes however, and a new problem comes into focus as the process starts over. Momentum and new funding quickly shifts to the new area of concern. This somewhat simplified analysis seems to explain the last 10 years of interest in community corrections programming.

In spite of the lack of public attention recently, community corrections continues to change rapidly. From the explosion of the programs in the early 1970's, the retrenchment period of the late 1970's and early 1980's, to the current era where a dominate theme is just emerging, community corrections has been moving forward, sideways, and sometimes even backwards a step or two.

So where are we going? Community corrections always seemed like a good idea. The notion of keeping the most amenable offenders in the community and providing services designed to improve their community functioning and lowering recidivism is appealing. 'Help offenders lead more productive lives' was the battle cry.

Enter the element of institutional crowding and the high cost of building new cells, and suddenly some types of community corrections become essential. Sentencing guidelines introduced the concept of supervised release and community services for the 'High risk' offenders. Tight money forces choices to be made. Long standing problems are redefined as serious and the criminal justice system becomes the mode of intervention (DWI's, Domestic Violence). Suddenly many diverse reasons support community corrections alternatives.

In many ways, community corrections has gone almost full circle. Clients have changed from the more amenable and lower risk to individuals with greater needs and posing a much greater risk to the community. Correspondingly, our central goal seems to be moving from helping offenders and protecting the community to protecting the community by providing programs for offenders. The concept of service also seems to be evolving from therapeutic to sanctions with therapeutic elements.

The process of change in community corrections seems to parallel the careers of many correction's professionals. Many of us started somewhat idealistically wanting to help offenders make better adjustments. As careers progressed, expectations had to be re-examined and for some the disillusionment became overwhelming. For those who escaped the cynicism, balanced perspectives and some pragmatic realism prevailed. I believe the same will be said for community corrections in the late 1980's. Community corrections is older and wiser.

The major challenge in the next several years will be to develop a wider range of effective community programs that are real sanctions that protect the community, yet are humane and provide positive alternatives for offenders. The challenge is being creative before we have to be. Unfortunately, innovation is often the result of crisis, but in this case, we can't afford to wait. Help stimulate your creativity by coming to the MCCA Conference in February. See you there!

REENTRY OFFERS RESIDENTIAL DOMESTIC ABUSE PROGRAM.

Reentry West is pleased to announce the opening of a residential Domestic Abuse Program. The women correctional clients, who were housed in the facility at 847 W. 7th St., were moved to a new location, Reentry Metro, 444 W. Lynnhurst, St. Paul, on September 15, 1986. This move afforded Reentry West to offer a new service to its contracting sources, a 12 bed residential Domestic Abuse Program.

A needs assessment was conducted during the summer of 1986 by polling the Ramsey County Adult Probation/Parole Officers, Project Remand staff, the Ramsey County Domestic Relations Unit, the Ramsey County Public Defenders Office, and the Wilder Community Assistance Program. This poll indicated an obvious need for residential services for the male domestic assault/abuse client. In the past, Reentry West has been able to accept, on a limited basis, some of these clients.

Reentry West will house the domestic assault/abuse clients in its twelve bed facility at 847 W. 7th Street. These clients will receive the same services as the men housed at 855 W. 7th Street. The staff will ensure that the men attend treatment groups and individual counseling as directed by the court. In addition, sign outs will not be approved to an address with a 'no contact' or 'restraining' order. Individual and group counseling will stress responsibility for their actions, as well as looking closely at chemical abuse.

Reentry West will accept men who have been charged or convicted of a domestic assault or abuse referred by an agent from one of its contacting sources. These individuals can be direct court placements (work release), as an alternative to incarceration, condition of probation, pre-trial, pre-sentence, or on a voluntary basis.

Please direct all referrals to Bruce Clendenen, Program Director or Tom Gothmann, Domestic Abuse Casemanager. Ph: (612) 227-6291.

MEMBERSHIP CONTACTED

Board members will be contacting the membership in January for input

concerning how they feel about being a member of MCCA. We will be asking things like what you like about being a member, what you don't like, what you'd like to see happen, etc. Please give this some thought. We are open for suggestions.

MCCA OFFERS INSURANCE FOR PROGRAM MEMBERS

The M.C.C.A. provides program members the opportunity to participate in a group medical, dental and life and disability plan. Group coverage consists of three medical plans, and one dental plan and one life and disability plan.

The three choices for medical plans are made up of one major medical (otherwise known as fee for service) and two H.M.O.'s. Major medical coverage is provided by The Travelers Insurance Company. H.M.O. coverage is provided by H.M.O. Minnesota and P.H.P.

The dental plan coverage is provided by The Travelers Insurance Company.

The life, accidental death and dismemberment and disability coverage are provided by the The Travelers Insurance Company.

For questions or coverage information, please contact M.C.C.A. insurance liaison person, Ray Ward, at 348-4005.

MCCA FEATURES STUDENT MEMBERSHIPS

MCCA is extending an invitation to students in the field of Corrections/Criminal Justice to join our organization. Student membership entitles you to the following benefits:

- bi-monthly newsletter, 'Happenings', which will keep you informed of current issues, upcoming training and conferences and news in the field of community corrections;
- **FREE** training sessions. Held monthly, topics this year have included Prostitution, Shame and Quilt and working with children from violent homes. They are presented by top notch professionals and are free to MCCA members;
- Receive information on MCCA's annual winter conference.

This is a great way for students to learn about Corrections, explore career options and network with professionals in the field.

For more information, call:

Patt Adair, (612) 348-2762, or
Barb Emer, (612) 870-7227

Or send a check for \$5.00 to:

Rod Johnson
MCCA-Student Membership
666 Marshall Ave.
St. Paul, Mn 55104

MCCA Gains Two Program Members

Hidden Ranch and Women Helping Offenders have been approved for Program Membership in the MCCA.

Hidden Ranch is a private non-profit organization established in 1978 to offer transitional housing and support services to women who require a structured living environment due to some crisis in their lives.

Located on Portland Avenue in Minneapolis, Hidden Ranch offers women and their children safe, secure transitional housing. After their stay, these women are helped to work toward establishing a permanent home.

Since 1972, Women Helping Offenders in south Minneapolis has assisted men and women offenders in reshaping their lives by providing a wide variety of human services.

Women Helping Offenders has tried to provide services based on the greatest needs of the client population.

Available evidence indicates that female offenders are far more disadvantaged than men, and encounter as many problems, if not more, in making the transition from prison to community. Of all the problems confronting the female offender, none is more pervasive than her inability to obtain and keep meaningful employment.

Therefore, effective July 1, 1984 Women Helping Offenders became a career development and training program for women offenders only.

The goals of the program are to increase the employability of female offenders over the age of 16; and to decrease the chance of them returning to criminal activity.

Program Membership benefits the entire agency and its staff. MCCA offers a reduced rate for training for all staff of a member program. The member agency is also eligible for group insurance plans, including health, life and dental coverage.

EDNA LATSON ("Iridology") recently retired from sixteen years with the Hennepin County Court Services. A student of the healing arts, she has studied iridology for four years and has learned that eye reflects the abnormalities, thoughts and emotions throughout the body.



ROD JOHNSON ("Privatization, Contracting") has been the Director of Wilder Community Assistance Programs in St. Paul since 1980, prior to which he served as Assistant Director of Bremer House for four years. He has previous experience as a school social worker and as a group worker-parole officer and institution case worker for the Department of Corrections. As Director of CAP, Rod has coordinated the contracting of numerous services to corrections clients. Rod has been a member of the MCCA Board of Directors since 1981 and is our current President.



DR. JUDITH MILLER, ACSW ("Learning Styles") Professor of Social Work, The College of St. Catherine. Dr. Miller, in addition to teaching, has done research, counseling and consulting in many areas of social work.



BILL NELSON ("Privatization, Contracting") is Director of VOA Regional Corrections Facility, a privately run correctional facility for women. The director of VOA Residential Services in Minneapolis since 1974, Bill has prior experience with the Hennepin County Pre-Trial Diversion Project and the Department of Corrections.

JEANETTE H. MILGROM, MSW ("Ethical Boundries and Self Disclosure") is the Director of Consultation and Training at Walk-In Counseling Center (WICC). She has worked in a range of social work and mental health services in Holland, England and in the USA. Her work at WICC has included problems of victimization (rape, incest, battered women) and, since 1976, the problem of sexual abuse of clients by therapists and counselors.

KATE HARRI, M.A. ("The PMS Connection") is a clinical specialist/consultant with the PMS Clinic of Minneapolis, Inc. She has seven years of experience in the criminal justice system, has worked with adolescents and their families as well as with the chemically dependent person. Ms. Harri specializes in dealing with PMS as it relates to adolescents, female offenders and chemically dependent women. She has a BA in Sociology/Criminology from the University of Minnesota and an MA in Counseling from the College of St. Thomas in St. Paul, MN.

TOM LAVELL ("Privatization, Contracting") is Director of the Department of Court and Field Services, Hennepin County Bureau of Corrections, with responsibility for probation, parole and domestic relations and the Guardians Ad Litem. Lavell served as acting director of the Department in 1985-86.



BETH EMSHOFF ("Kids and Fire") is a research fellow at the University of Minnesota Center for Youth Development. She previously worked for five years for the Minneapolis Fire Department as Coordinator for Fire Prevention Education and is on a national task force for fire setting. She has written two manuals for the federal government on juvenile fire setting and initiated the Minneapolis Mayor's Task Force on Fire setting in 1983. She is concerned with helping professionals to understand the juvenile fire setter and to accept them for treatment.

MARY NACHBAR ("Kids and Fire") has been a fire fighter with the Minnetonka Fire Department for nine years. She is currently President of the Governor's Council for Fire Prevention and Control, Vice President of the Minnesota Fire Marshalls Association. As a regional representative for the National Fire Protection Association, Ms. Nachbar has traveled extensively with the "Learn Not to Burn" school curriculum.

MINNESOTA COMMUNITY CORRECTIONS ASSOCIATION

Happenings

A publication of the Minnesota Community
Corrections Association, 666 Marshall Ave.,
St. Paul, MN 55104 — 292-1131.

The opinions expressed in the Happenings
are those of the contributing writers.

Readers are encouraged to respond to the
content of this newsletter and to write on
topics of interest to its readers. The staff
reserves the right to edit submitted articles.
Copy deadline is the 25th of odd-numbered
months. **Members of the newsletter
committee are:**

- Dale Fisher, Editor**
Hennepin County Court Services
- Tom Gothman**
Reentry West
- Mia Olsen**
Genesis II For Women
- Laura Sissala**
REM-Lyndale
- Karole Williams**
180 Degrees
- Ben Roberts**
Ramsey Co. Community Corrections
- Pat Simons**
The Bridge
- Tim Peterson**
Ramsey Co. Community Corrections

*We would like to thank the men in the print shop
at MCF-STW for their help in publishing this
newsletter.*

ANNUAL WINTER CONFERENCE FEBRUARY 12 — 13, 1987 WILDER FOREST — MARINE ON ST. CRIX

“LIVING UP TO OUR REPUTATION— CONTINUING THE LEADERSHIP”

**Keynote Speaker
Les Green**

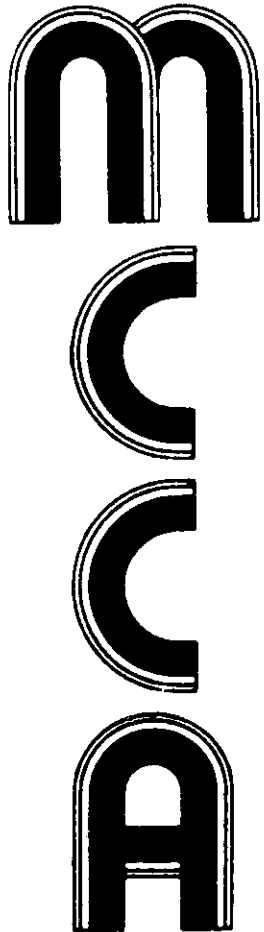


MINNESOTA COMMUNITY CORRECTIONS ASSOCIATION
666 Marshall Avenue
St. Paul, MN 55104

NON—PROFIT ORG.
U.S. POSTAGE
PAID
PERMIT NO. 1994
MPLS., MN

STEPHANIE OLSON

**MINNESOTA COMMUNITY
CORRECTIONS ASSOCIATION**



**ANNUAL WINTER CONFERENCE
FEBRUARY 12—13, 1987
WILDER FOREST — MARINE ON ST. CROIX**

**“LIVING UP TO OUR REPUTATION -
CONTINUING THE LEADERSHIP”**

**Keynote Speaker
Les Green**



ANNUAL WINTER CONFERENCE

FEBRUARY 12 - 13, 1987

WILDER FOREST - MARINE ON ST. CROIX

This Conference is to enjoy while you learn. Wilder Forest is a beautiful wooded site that demands casual dress. Bring your boots and plan to have fun. Certainly, plan to spend the evening with us. Even if you choose not to spend the night, we encourage you to stay for supper and the Thursday evening activities. After supper we will enjoy a social hour(s) and activities in the common. We are planning activities both indoors and out. Bring your cross country skis or use Wilders equipment for a moon-light trek on groomed trails. Or join us for a good old fashioned Hayride, Folk dancing and scavenger hunt. If you prefer more sedentary enjoyment, relax by the fire and play games, cards or just network with your fellow professionals.(?!)

The registration fee includes all meals listed and use of the beautiful Wilder facilities. We hope you'll take this time to relax and learn with us.



ADVANCED REGISTRATION FOR CONFERENCE ATTENDANCE. ALL REGISTRATION MUST BE RECEIVED BY **FEBRUARY 1, 1987**
 Registration fee includes your 1987 MCCA Individual Membership.
 Each registrant must fill out an individual form.

NAME _____ POSITION _____
 AGENCY _____ TELEPHONE NO. _____
 ADDRESS _____

CONFERENCE FEE & MCCA MEMBERSHIP
 \$50 (Includes four meals).....\$ _____
 OVERNIGHT ACCOMODATIONS
 \$10.....\$ _____
 TOTAL ENCLOSED.....\$ _____

1987 Conference Committee	
Dale Fisher	Karole Williams
Laura Sissala	Jean Engel
Cheryl Wieum	Joan Cichosz
Dennis Avery	Ron Sundell

MAKE CHECKS PAYABLE TO MINNESOTA COMMUNITY CORRECTIONS ASSOCIATION
 SEND COMPLETED FORM AND CHECK TO:
 Raymond Ward
 Operation deNovo
 251 Portland Avenue
 Minneapolis, MN 55415

Conference Schedule

Thursday, February 12, 1987

* * * * *

9:30-10:30 (Earth Lodge) Registration

10:30-11:45 (Commons) "Living up to our Reputation - Continuing the Leadership" - Les Green

12:00-2:00 (Commons) Lunch and Break (Skiing and Hay Ride)

2:00-3:15 Workshops

(Commons)
 "Marketing Community Corrections"
 Tom Zoet and Bruce Clendenen Discuss
 prospective needed to successfully
 market services and serve "customers" of
 community corrections.

(Meeting House)
 "Ethical Boundaries and
 Self-Disclosure" - Jeanette Milgrom
 A look at professional vs personal
 boundaries-Appropriate use of self disclosure

3:15-3:30 Break

3:30-5:00 Self Care Mini-Workshops

(Clearing) "Reflexology and Body Massage" - Kathy Tapper and Bonnie Yarger - Hands on presentation to relieve stress and headaches

(Meeting House) "Natural Home Remedies" - Vicki Stewart - Understanding Health and illness from a wholistic prospective

(Homestead) "Iridology" - Edna Latson - Diagnosing body stress by observing changes in the eye

6:00-7:00 Supper (Commons)

7:00-???? Door prizes, evening activities, hay ride, skiing, games, scavenger hunt, awards and folk dancing

Friday, February 13, 1987

* * * * *

8:00-9:00 Breakfast

9:15-10:30 Workshops

(Commons)
 "Supervised Release" - Jim Bruton -
 Presentation will include transition of
 treatment to surveillance, conditions of
 release, revocation process and work
 release.

(Meeting House)
 "The PMS Connection" - Kate Harri -
 A didactic presentation addressing
 relationship of PMS to crime and recent
 developments in the field.

10:30-10:45 (Commons) Break

10:45-12:00 Workshops

(Commons)
 "Privatization, Contracting" Tom Lavelle,
 Bill Nelson, Rod Johnson. Explore problems,
 concerns, solutions to private agencies
 providing community corrections services.

(Meeting House)
 "Kids & Fire - An Incendiary Combination"
 Mary Nachbar, Beth Emshoff Discussion of
 normal and abnormal behavior in juvenile
 arson and difficulties in community response
 treating them.

12:00-1:30 (Commons) Lunch and Break
 (Business Meeting Awards)

1:45-3:45 General Workshop
 (Commons)

"Learning Styles:" -Dr Judith A. Miller - Participants will look at how our learning style preferences affect our work with clients and collateral human service workers. Workshop participants will assess their own learning styles.

Camp address:

14189 Ostlund Trail N.
Marine on the St. Croix, MN 55047

DIRECTIONS TO WILDER FOREST

(40 minute drive from St. Paul)

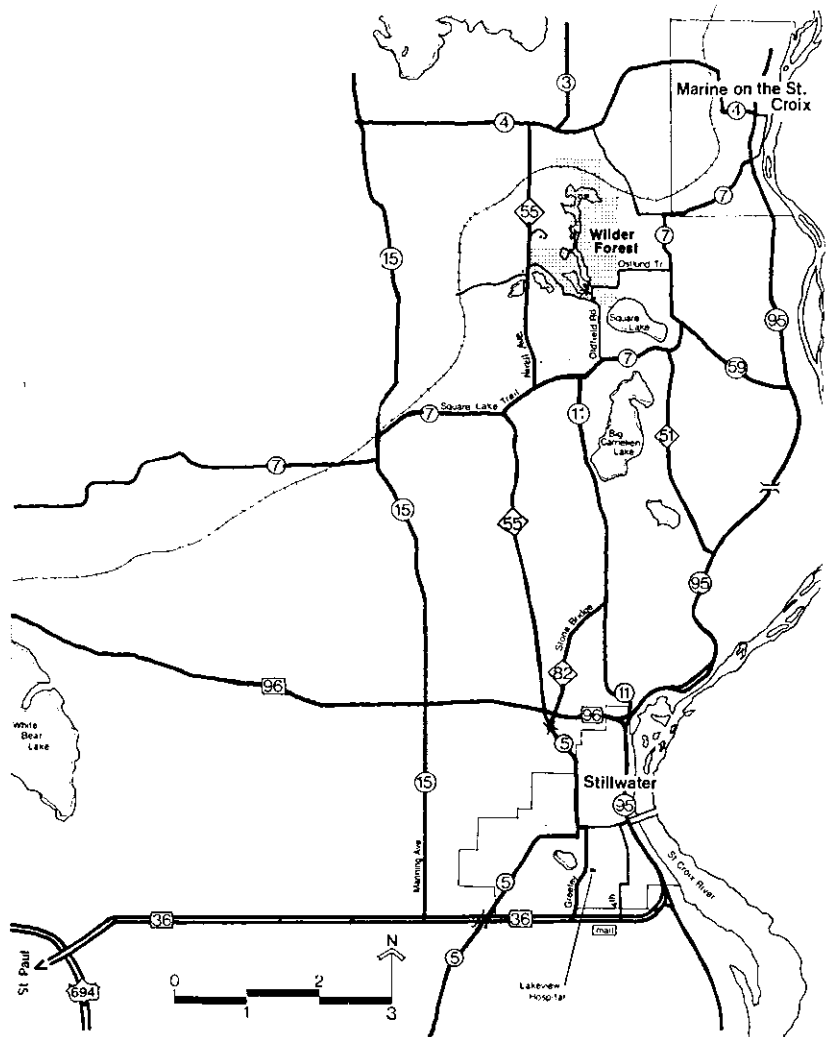
- * go east on hwy. 36 to Co. Rd. 15 (Manning Ave.) and turn left
- * go north 7.3 miles on Co. Rd. 15 to Co. Rd. 7 (Square Lake Trail) and turn right
- * go east 5 miles on Co. Rd. 7 to the "T" just past Square Lake County Park and turn left
- * go north .7 mile on Co. Rd. 7 (Paul Ave.) to Ostlund Trail and turn left
- * go .7 mile to the Village Entrance
- * Information on your group will be posted at gateway shelter as you walk from the parking lot.

Watch for:

MCCA



Signs



MINNESOTA COMMUNITY CORRECTIONS ASSOCIATION
666 Marshall Avenue
St. Paul, MN 55104

NON-PROFIT ORG.
U.S. POSTAGE
PAID
PERMIT NO. 1994
MPLS., MN.